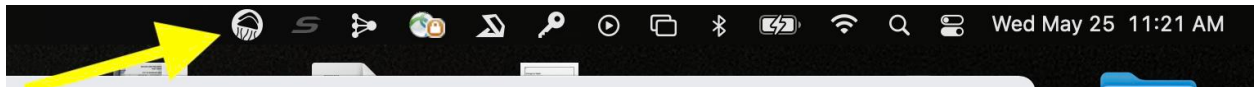


# Jellyfish Connect

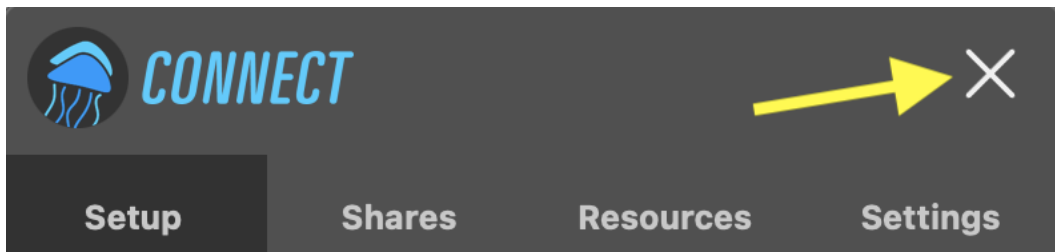
## Overview

The Jellyfish Connect app is your all-in-one application to get your users connected to your shares and access our free tools. When you launch the app, the Jellyfish icon will appear in the top right bar of your monitor (where Wi-Fi, Bluetooth, and battery statuses are, among others).

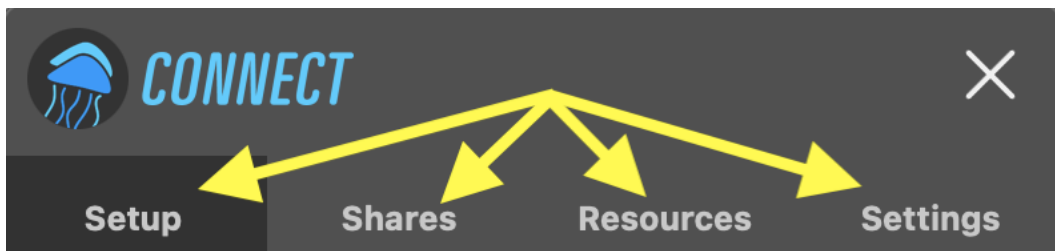


Click the Jellyfish icon anytime you want to connect to your shares, access our tools, or activate remote access to your Jellyfish.

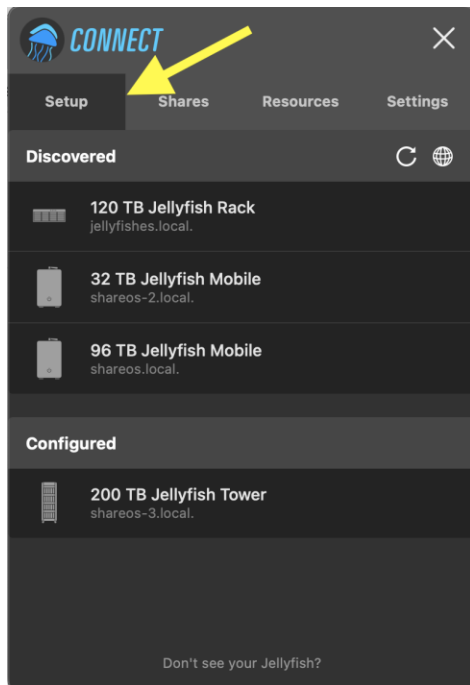
When you click the icon and launch Jellyfish Connect App, at the top of the frame you'll see the Jellyfish Connect logo and a large X to close it out when you're done using it.



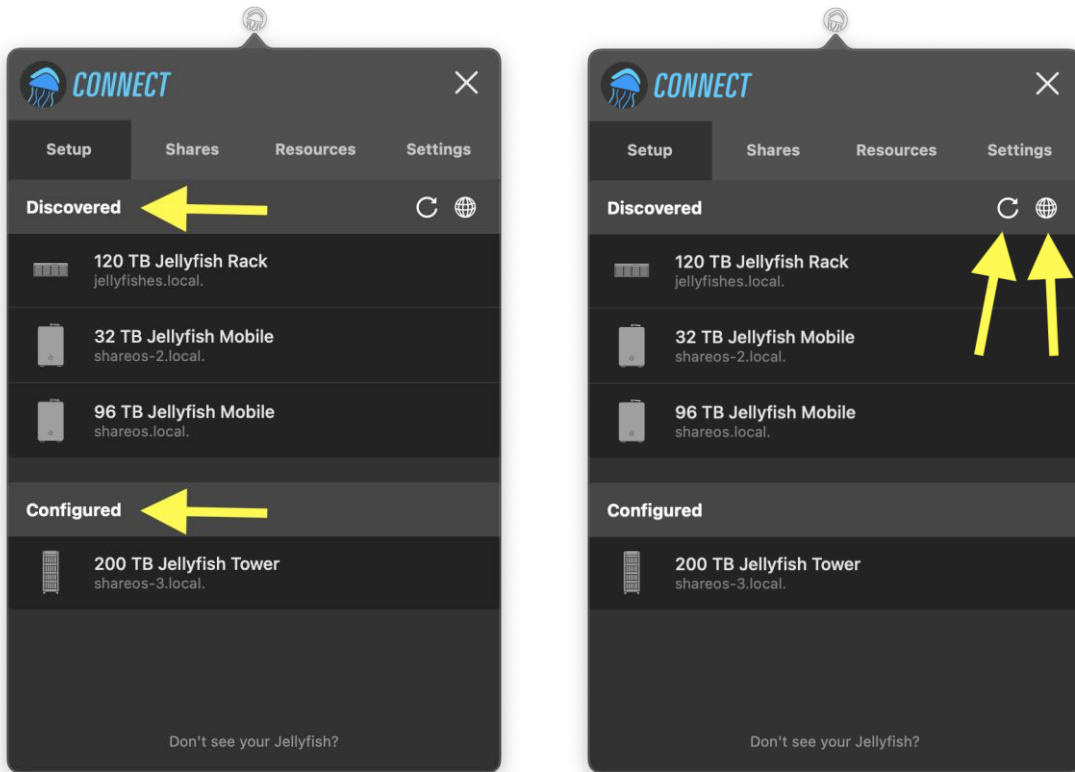
The Jellyfish Connect app's uses are divided into four separate tabs, just under the logo. **Setup**, **Shares**, **Resources**, and **Settings**. Let's break each of those down!



## Setup

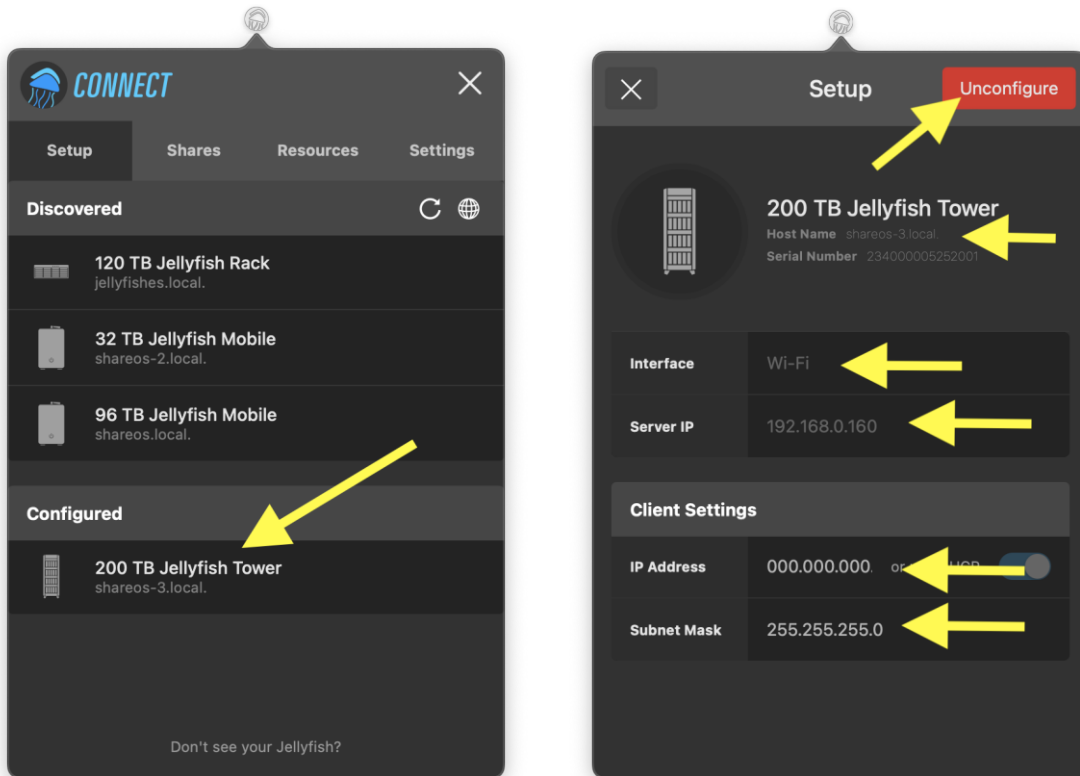


The **Setup** tab allows you to configure your Jellyfish for the first time. When you click that, you'll see two headings, **Discovered** and **Configured**. You'll also see a circular arrow button that refreshes anything on this tab, and a globe icon that launches your computer's Network settings if you should need to update any of those.



The **Discovered** heading shows any Jellyfish units available to connect to that you have not yet configured. The **Configured** heading will show any that have already been configured to work with your computer.

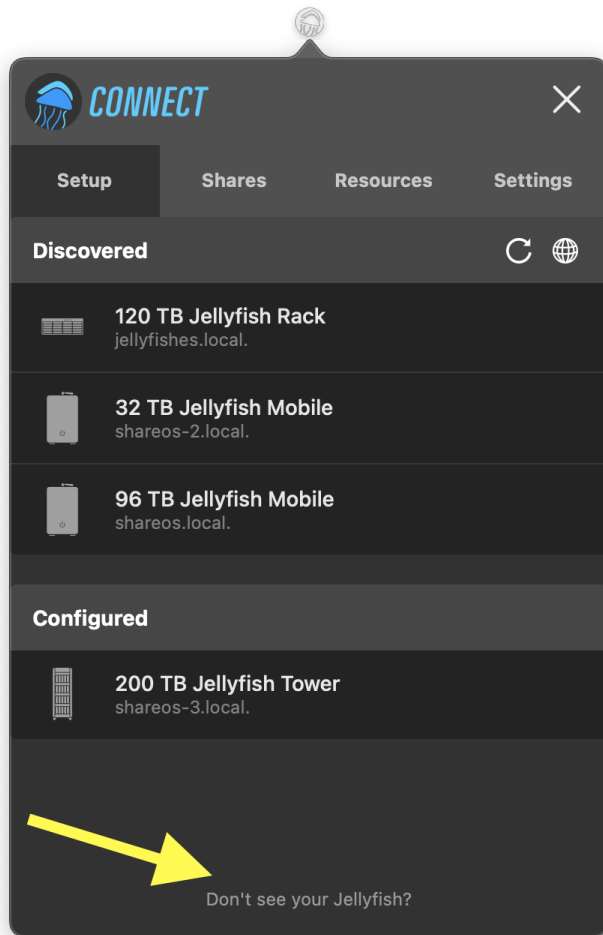
Once configured, clicking on the name of a connected Jellyfish will bring up a status box showing the build of your Jellyfish, server IP, serial number, and client settings like your IP Address and Subnet Mask. You'll see a red button at the top right of the box to **unconfigure** if you should ever need to, and an **X** in the top left corner to exit this dialogue box.



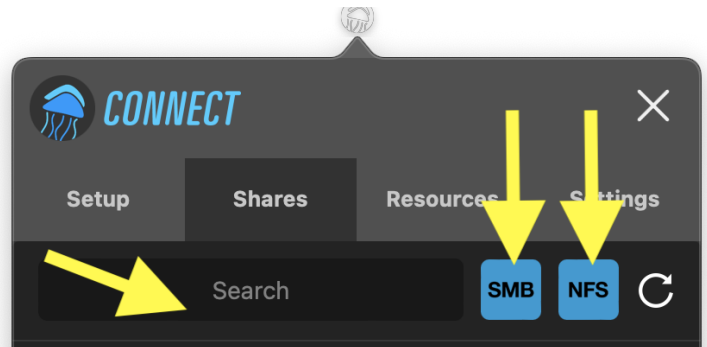
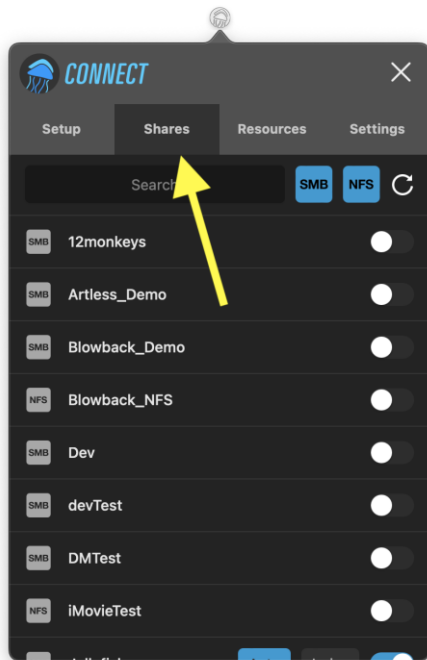
Clicking **Don't See Your Jellyfish?** at the bottom of the setup tab will launch a manual setup if you encounter any issues with the automatic setup. Here is a link to OWC's step-by-step manual setup:

<https://support.lumaforge.com/products/jellyfish/support/how-to-set-up-a-workstation-to-connect-to-a-switch>

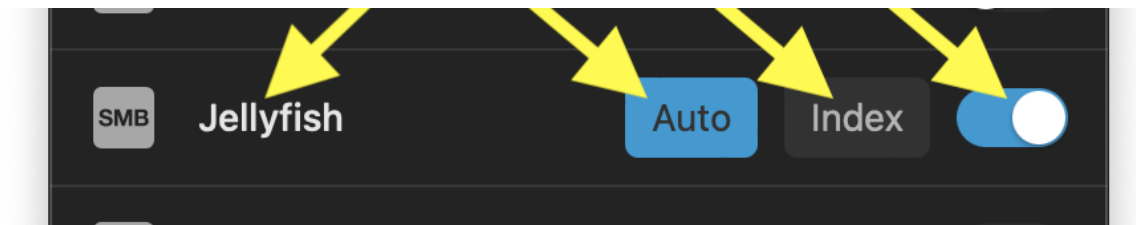
**Note for Windows users:** Here is a link to OWC's step-by-step manual configuration for Windows users: <https://support.lumaforge.com/products/jellyfish/support/configure-windows-workstation-manually>



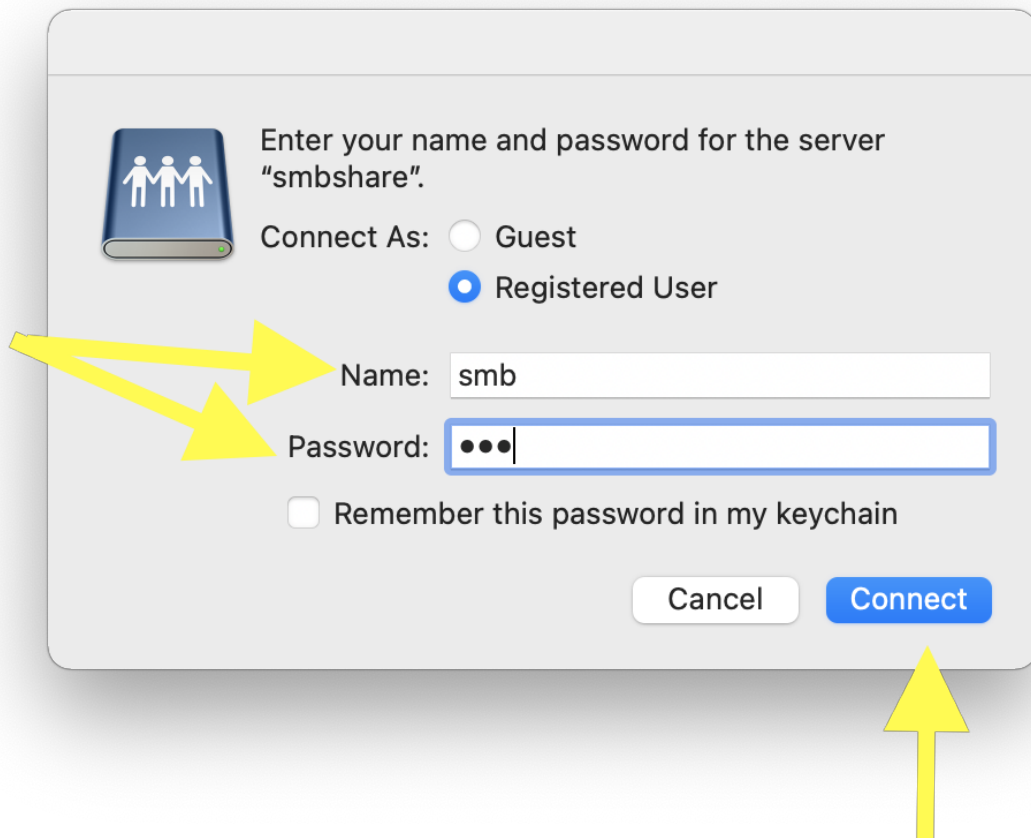
## Shares



Your Shares tab is where you'll keep track of any shares that have been set up, and toggle on/off buttons to mount or unmount each listed share. When you click the **Shares** tab, you'll first see a **Search** bar with toggles for SMB or NFS, and a refresh arrow. Clicking **SMB** will populate a list of available SMB shares, and clicking **NFS** will do the same for NFS shares. Most users will use SMB shares for their workflows.



In the list of shares, your Jellyfish will initially only list two: **Jellyfish** and **J-Cache**. Toggling on for any one of those will mount that share for you. When prompted for a username and password to mount the Jellyfish, you can enter the initial dummy credentials that are a placeholder until you set your own credentials. Toggling on the mounting button will bring up two additional buttons for the selected share: **Auto** and **Index**. Selecting **Auto** is recommended. While selecting **Index** will give you greater indexed search options within your share, it slows down your access considerably. Clicking the **Refresh** arrow at the top will quickly repopulate your list, where you can double check to see that any new changes you've selected have taken place.



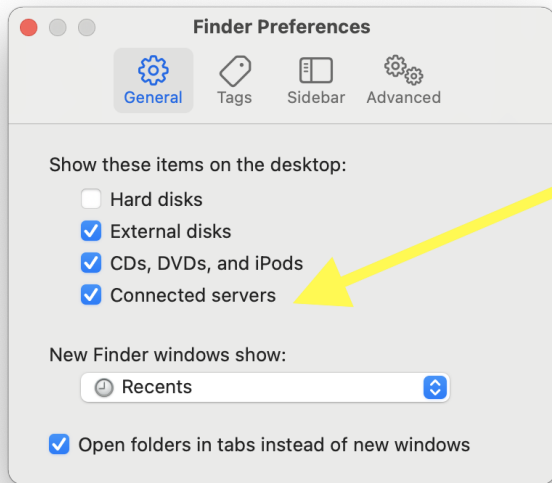
The initial login credentials to mount the Jellyfish and J-Cache SMB shares are:

Username: smb  
Password: smb

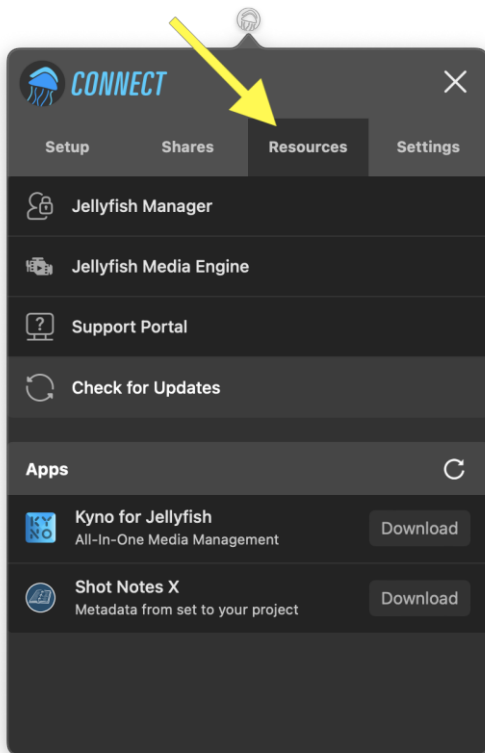
You'll see the Jellyfish icon appear on your desktop when this is successfully completed. You can use this icon like you would any folder on your computer: drag and drop items into the Jellyfish share and organize it any way that suits your workflow.



If it does not appear, you may need to adjust a simple setting in Finder. Open Finder's Preferences dialogue and be sure to select "Connected servers" under the General tab.

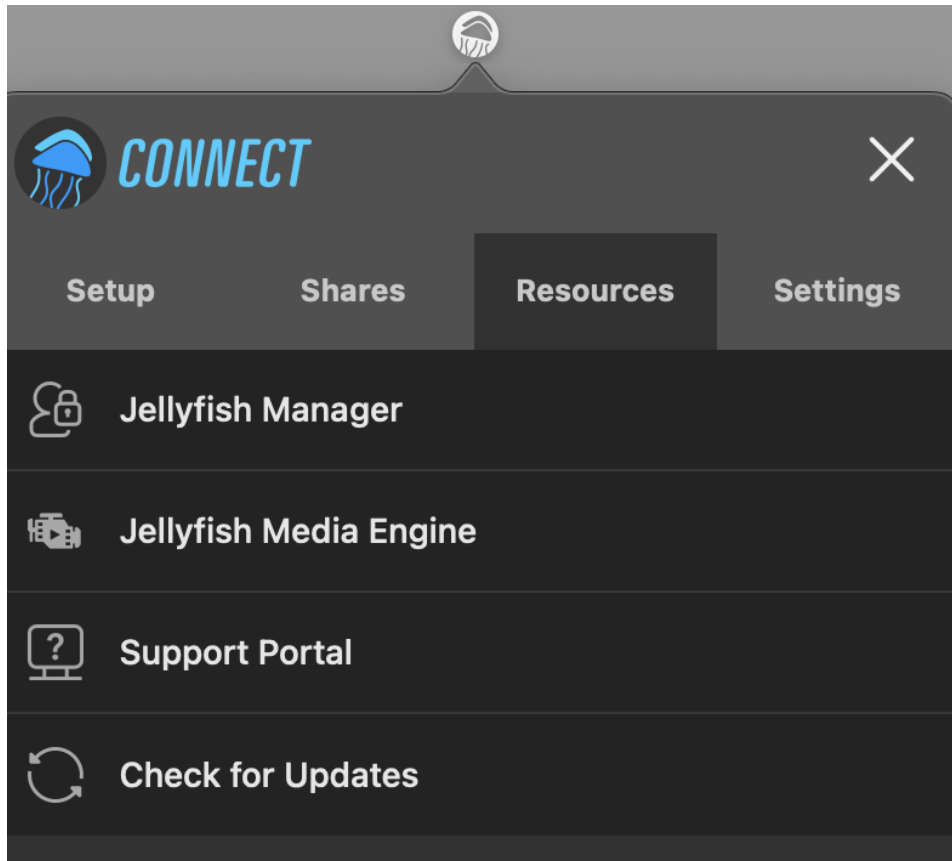


## Resources





The **Resources** tab will help you with setting up further access for you and your users, integrate separate apps, and update your Jellyfish software. There is a list of selections that will launch separate windows, and then an **Apps** heading, with a **Refresh** arrow.



The first selection is **Jellyfish Manager**. Jellyfish Manager primarily for anyone on the administrative side of your workflow. Here you can create usernames, set passwords, grant share access, and check on the health of your Jellyfish. Clicking this will launch the login page for Jellyfish Manager in your browser, where you will use dummy credentials before creating your own unique username and password. We will dive further into Jellyfish Manager in its own article.

The initial login credentials for Jellyfish Manager are:

Username: main  
Password: luma

The second selection in the **Resources** tab is **Jellyfish Media Engine**. This will launch **Media Engine** in your browser. Media Engine is a free proxy tool included with your Jellyfish. Be sure to check out our video tutorials that demo how to use this application.

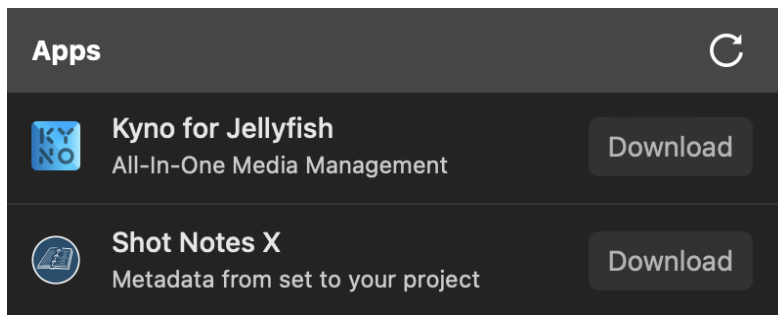
**Support Portal** launches the Jellyfish support page in your browser. In this central help center, you can access our many support articles, grouped by topic and searchable within each

respective category. You'll also find links to helpful video tutorials and a link to contact our team for any assistance you may need beyond any of the documentation library.

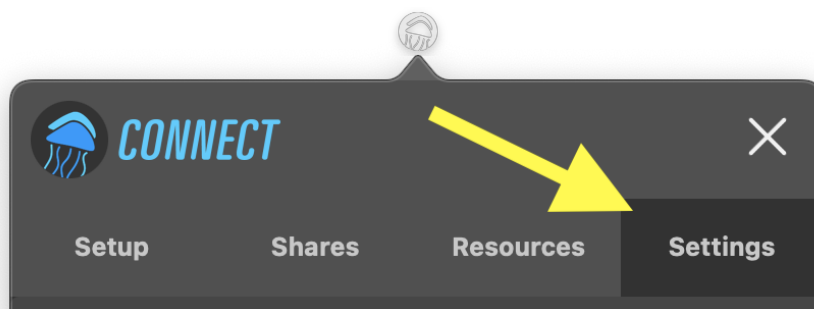
**Check for Updates** gives options to view any updates available. If you see a notification that says you have an update available, please reach out to our support team to request your Jellyfish update in our support portal:

<https://support.lumaforge.com/products/jellyfish/support/contact>

The **Apps** heading lists available apps that work seamlessly with your Jellyfish. The **Refresh** button updates that list. You should see entries for **Kyno for Jellyfish**, an all-in-one media management tool, and **Shot Notes X**, a metadata manager that is designed only if you are using FinalCut Pro.



## Settings



The **Settings** tab is where you would set up and configure your remote access when ready. Other than managing that, the only other setting you'll find here is a toggle button on whether you would like Jellyfish Connect to launch when you start up your computer. Lastly, this tab displays which version of the Jellyfish Connect app you are using, which will come in handy if ever troubleshooting.

